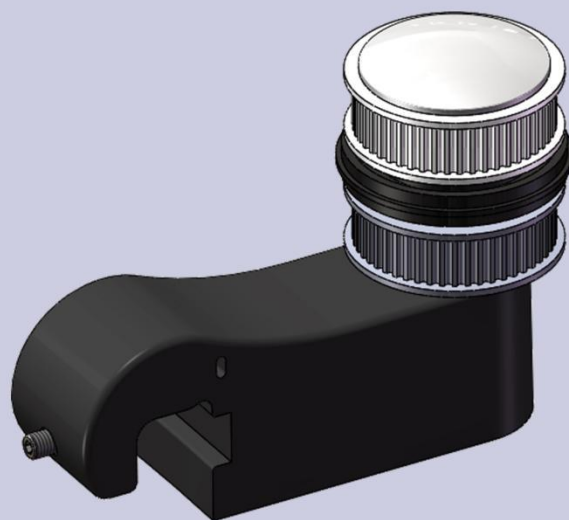


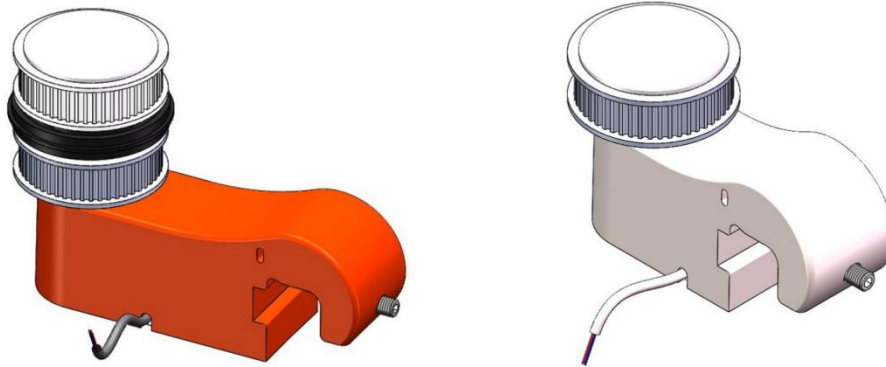


测纱长传感器

YARN LENGTH SENSOR



一、外观图/Exterior View



二、技术指标/Technical Specifications

- 1、每圈感应点数/Number of Sensing Points per Revolution: 1
- 2、感应器形式/Sensor Type: 槽式光电/Slot-type Photoelectric
- 3、供电电压/Supply Voltage: DC5V~DC24V
- 4、额定电流/Rated Current: 20mA
- 6、指示灯/Indicator Light: 静态常亮，感应触发时闪烁一次/ Steady ON, Blink once upon sensing trigger
- 7、测量精度/Measurement Accuracy: 最大1圈/Within 1 revolution

$$\text{百针纱长最大测量误差} = \frac{100 * \text{储纱器纱轮周长}}{\text{每圈计数感应次数} * \text{总针数}}$$

$$\text{Maximum Measurement Error for Hundred-needle Yarn Length} = \frac{100 * \text{Circumference of Yarn Winder Wheel}}{\text{Number of Sensing Counts per Revolution} * \text{Total Needle Count}}$$

$$\text{圈纱长最大测量误差} = \frac{\text{储纱器纱轮周长}}{\text{每圈计数感应次数}}$$

$$\text{Maximum Measurement Error for Circular Length} = \frac{\text{Yarn Wheel Circumference}}{\text{Number of Sensing Counts per Revolution}}$$

- 8、感应码盘开角/Induction Disk Opening Angle: 60°
- 9、同步轮齿数/Synchronization Wheel Teeth: 30

三、使用方法/How to Use

- 1、与 KMT SMART 控制系统配套使用/Used in conjunction with the KMT SMART control system.
- 2、控制面板中<测纱器>页面，必须输入正确的储纱器纱轮周长，单位MM，精确到一个小数点（0.1MM）。SET1子页面中，T1列表示储纱器同步轮齿数， T2列表示测纱传感器同步轮齿数（固定为 30）。

In the SMART C1 control panel's <Yarn Sensor Settings> page, you must input the correct yarn wheel circumference of the winding device in millimeters, accurate to one decimal place (0.1mm). In the SET1 sub-page, T1 represents the synchronization wheel teeth of the winding device, and T2 represents the synchronization wheel teeth of the yarn length sensor (fixed at 30).

- 3、倘若需要开启纱长异常报警，请在页面中输入正确的纱长范围值，并在对应通道启用报警。

If you need to enable yarn length abnormality alarms, please input the correct range values of the yarn length on the page and enable alarms for the corresponding channels.